

Temperature Tracker

Temperature Tracker is a user-friendly device. It takes just a few minutes to learn how the entire system works. It's excellent suited for industrial oven and laboratory oven temperature profiling. Mandatory test in Qualicoat, QIB and GSB accredited laboratories.

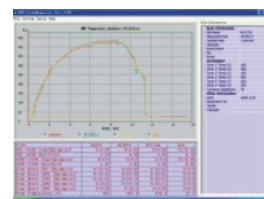
Temperature Tracker is mainly made up of Oven datalogger, analysis software and insulation box.

Oven datalogger: Oven datalogger is the heart of temperature tracker. It designed to measurement temperature and store them for a specified amount of time. This instrument measures continuously but only stores readings at certain intervals defined by the operator. The maximum recording period depends on the number of sensors being used and the specified recording interval.

It offers easy-to-use, high quality temperature logging for industrial paint and powdercoat cure ovens. The oven data tracker is fitted with a large display for easy menu-driven operation and quick display of measurement results.

Analysis software: allows user to analyse the logged temperature data and create detailed reports. Advanced oven profiling features like cure data analysis, ideal cure and tolerance bands, together with a wide range of display, report and printing options, make Oven Logger the most flexible temperature logging solution available.

Insulation Box: A high quality insulation box with outer shield of high-grade stainless steel. The anodized aluminum inner box is shielded with a carefully formulated mixture of insulation material, which makes the combination suitable to resist high temperatures for long time. This insulation box is absolutely silicone free, and therefore very suitable for applications in automotive and wet paint coatings.



Soft-ware

| Ordering Information → Technical Item ↓ | One-Channel | Four-Channel | | Seven-Channel | |
|--|--|--|-------------------------------------|---|--------------------------------------|
| | BGD 951 | BGD 954/1 | BGD954/2 | BGD 957/1 | BGD 957/2 |
| Number of Channels | 1 | 4 | 4 | 7 | 7 |
| Temperature range | -100°C ~ 300°C | -100°C ~ 300°C | -100°C ~ 500°C | -100°C ~ 300°C | -100°C ~ 500°C |
| Duration | 45min for 200 °C 60min for 150°C | 60min for 300°C 120min for 150°C | 60min for 500°C 120min for 300°C | 60 min for 300°C 120 min for 200°C | 60min for 500°C 120 min for 300°C |
| Division | 0.1°C | 0.1°C | | 0.3°C | 0.5°C |
| Accuracy | 0.5% | 0.5% | | 0.5% | |
| Storage | Can store 32,000 readings. Record per seconds for 5 hours | Every channel can store 16,000 readings. Record per seconds for 5 hours | | Record per seconds for 4 hours | Record per seconds for 3 hours |
| Sampling period | 1s, 10s | 1s, 2s, 3s, 4s, 5s, 6s, 10s, 20s, 30s, 1min programmable | | 1s, 2s, 3s, 5s, 8s, 10s, 12s, 20s, 40s, 60s programmable | |
| Setting Software | ① Can select sampling period ② Print the Tem.Curve with Computer ③ Check the data with EXCEL | ① Can select sampling period ② Show the real-time Tem.curve ③ Can save many groups datas | | ① Select or unselect channel with yes or no ② Verify the accuracy separately for each channel ③ Easy to choose sample rate ④ Switch ON/OFF | |
| Analysis software | No | ① Display Tem. datas; ② Calculate heating rate between tow Tem.level ③ Calculate total time above two different Tem ④ Calculate peak Tem. ⑤ Compare different Tem. profile; ⑥ Print Report | | | |
| Standard Disposition | ◆ Oven datalogger ◆ 2 pcs Thermocouple (0.5m, 1.5m) ◆ USB cable ◆ Setting software ◆ Manual | ◆ Oven datalogger ◆ 4 pcs temperature sensors ◆ USB cable ◆ Setting software and Analysis software ◆ Insulation box ◆ Manual | | ◆ Oven datalogger ◆ 7 pcs temperature sensors ◆ USB cable ◆ Setting software and Analysis software ◆ Insulation box ◆ Manual | |
| Size (mm) | φ 63 × 160 | 110 × 125 × 300 | 135 × 155 × 300 | 100 × 120 × 280 | 130 × 160 × 300 |